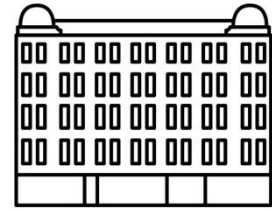


# wasps south block



## bookable spaces

South Block has a variety of options available to those looking for a temporary space within a creative hub in an unbeatable location. We can provide space suitable for meetings, screenings, lectures, talks, workshops, symposia, exhibitions, launch events, or pop-up shops at fair rates.

## the project room



The Project Room is a flexible space that can be easily adapted for private or public use. Measuring 518 sq ft, the room can comfortably fit 20 people in its boardroom layout, or can accommodate workshops, seminars, and retail events. The room is equipped with: a projector, cables (for Mac & PC), and screen; flipchart easel, flipchart paper and pens; glassware and decanters. Unfortunately this space is not accessible to wheelchair users. Our other meeting rooms within the building are accessible, so please see overleaf for more information.

For booking rates, please see *prices* section of this document.

## cafe/project space



South Block's project and café space includes the large street-facing space within which our coffee shop 'All That Is Coffee' is based. Boasting a 1076 sq ft footprint, with windows nearly 18 ft wide, the space is ideal for showcasing amazing creative activity. The bright and spacious environment can be reconfigured to suit a variety of purposes and is a perfect space for more social events. The event space can be used for a wide range of purposes: discussion, presentation, pop up exhibition, film screening, product launch, workshop etc. We do not hire out the space for music events or parties. During the weekend the use of the space includes the project room which is located at the back of the ground floor.

This area acts as a café/public space from Monday to Friday between 9.00am - 5.00pm, during this time bookings cannot be made in the event space.

*Please note that access during the week cannot be gained until 5.00pm (café close) so load in should be considered from this time which should impact the starting time of the event. Bookings made must be stated inclusive of set up and clear up times and charged for the total hire period.*

We are able to provide wireless-internet access, café tables, up to 30 chairs, portable projection screen, digital projector, extension cables and flip chart. Please note that whilst using the space access to the café working area is not permitted.

The café and project space is for the most part wheelchair accessible and an accessible toilet is located on the first floor with lift access. Unfortunately the project room, adjacent to the main space, is not accessible to wheelchair users.

For booking rates, please see *prices* section of this document.

## meeting rooms



In addition to our ground floor bookable area, there are meeting spaces within South Block: Room 100 (which seats 8 people), Room 115 (which seats 6 people) and Room 406 (which seats 6 people). These spaces are ideal for more intimate meetings where privacy is required.

## booking procedures

If you are interested in hiring one of our spaces at South Block please email: [SouthBlock.Reception@waspsstudios.org.uk](mailto:SouthBlock.Reception@waspsstudios.org.uk) or call 0141 271 4700

**terms** Spaces should be returned in the condition they were found. Tables that have been moved to accommodate the event should be returned and set up ready for café business. Tables should be wiped down after use. South Block does not offer catering, and will not provide any bin bags, cutlery or tableware. It is the organisation's responsibility to dispose of any non-café items in their own bin bags to be disposed of in the South Block bin. External hire of the project space (excluding the project room) is not possible whilst the café is open during the week (9am – 5pm). We do not hire out South Block spaces for music events, and no alcohol may be sold on the premises.

# prices

SOUTH BLOCK - £40 deposit will be taken for exhibitions			
LOCATION	CLIENT	DURATION	COST
Meeting Rooms - If meeting is outwith normal opening hours an additional £15 per hour will be charged to cover staff.	Artist & Charity Tenants	0-2 hours	FREE
		2 hours +	£5 per hour
	Commercial Tenants	Hourly	£10 per hour
		1/2 Day (4 hours)	£36
		Full Day (8 hours)	£64
	External Hires	Hourly	£22 per hour
		1/2 Day (4 hours)	£79
		Full Day (8 hours)	£141
		Evenings	Price Available on Enquiry
		Weekend	
Exhibition (café/project space) -comes with 1 member of Wasps staff - additional staff will be charged at £15 per hour.	Artist & Charity Tenants	Evening Install/De-install/Opening	£15 per hour
		1/2 Day Weekend (4 hours)	£50
		Full Day Weekend (8 hours)	£100
		Full Day During Regular Opening Hours	£10 per day
	Commercial Tenants & External Charities	Evening Install/De-install/Opening	£20 per hour
		1/2 Day (4 hours)	£60
		Full Day (8 hours)	£110
		Full Day During Regular Opening Hours	£20 per day
	External Hires	Price Available on Enquiry	